

**PRAIRIE CANOLA**

**2009**

**VARIETY TRIALS  
TEST RESULTS**

---

Choose varieties based on  
comprehensive, objective data.



# HOW TO USE PCVT DATA

The Prairie Canola Variety Trials (PCVT) are conducted by the Canola Council of Canada (CCC) as a service to you, the grower. Entry by companies into PCVT is voluntary. The PCVT primarily features commercially available varieties, though some may not be widely available at time of printing.

The PCVT is all about comparing genetics under standard plots, a standardized protocol, and the same environmental conditions. The 2009 trials were conducted by seed companies, government researchers, and independent contractors in three growing season zones across the prairies – short, mid, and long season.

Two replicated tests were conducted at each trial site grouping varieties with similar days to maturity to ensure valid statistical comparisons.

Test plots were kept weed-free using conventional herbicides. Herbicide-tolerant varieties were not sprayed with their companion herbicides.

**You can look at this booklet as an important source of variety information to consider in making the best decisions for your farm.**

## USING THE TABLES

Each zone and test location is identified on the map (page 4). Variety characteristics are in the table on page 5. Trial results from the individual sites are presented in tables according to the three growing season zones and two tests.

PCVT results are presented as an average of the two check varieties 45H21 and InVigor 5020, so when you look at the zone tables, you will see the average yield of the checks set as 100% and other variety yields as a percentage.

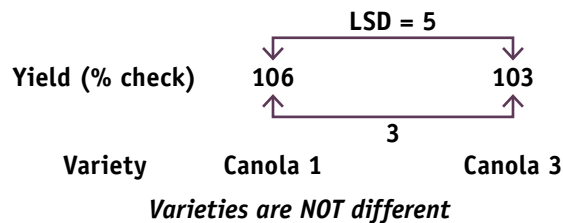
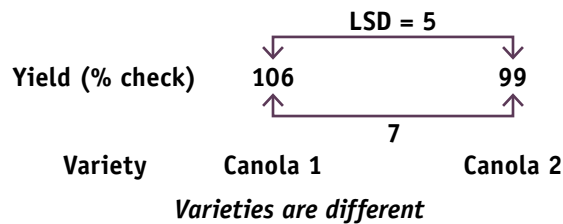
This booklet is one of several sources of information to consider in making the best decisions for your farm.

1. To begin, use the map on page 4. Identify your growing season zone and trial locations closest to your farm.
2. To evaluate yield potential, look at all locations in your growing season zone and the average yield for your zone.
3. Consider other information such as maturity, lodging resistance, and cost.
4. Ask your seed dealer for more information on specific varieties.
5. Review additional data on the Canola Performance On-line (POD) database at [www.canolacouncil.org/POD](http://www.canolacouncil.org/POD).

VARIETY		2009 Yield % of 45H21, 5020				2008 Yield % of 45H21, 5020. All Zones Average		2007 Yield % of 45H21, 5020. All Zones Average		Days to Maturity +/- days to 45H21, 5020		ZONES			Lodging Rating + = "better"	Blackleg Rating	Organization
Argentine Canola ( <i>B. nanus</i> )		Short (8)	Mid (14)	Long (10)	All Zones Average	Short	Mid	Long	All Zones	Height +/- inches	Short	Mid	Long	All Zones			
<b>CHECKS</b> Average of 45H21 & 5020	Hyb	100	100	100	100	100	100	0	0	0	0	0	0	0	0		
<b>CLEARFIELD</b>																	
30423-C7 *	Syn	99	97	94	97			4	3	3	3	4	1	R		BrettYoung	
5525 CL	Hyb	103	102	100	102			3	3	3	3	4	1	R		BrettYoung	
1651H	Hyb		89	85	88				2	2	2	3	0	R		CANTERRA SEEDS	
									3	3	3	4	1	R		DL Seeds	
									1	1	0	1	1	0	R	Pinn	

# TOOLS THAT CAN HELP YOU MAKE BETTER VARIETY CHOICES:

Least Significant Difference (LSD) value indicates whether differences between varieties are meaningful (real). When comparing yield of varieties in a test, the LSD value is a handy tool. For example, if the yields for varieties canola 1, canola 2, and canola 3 are 106, 99, and 103 and the LSD is 5, some simple math allows you to do a proper comparison.

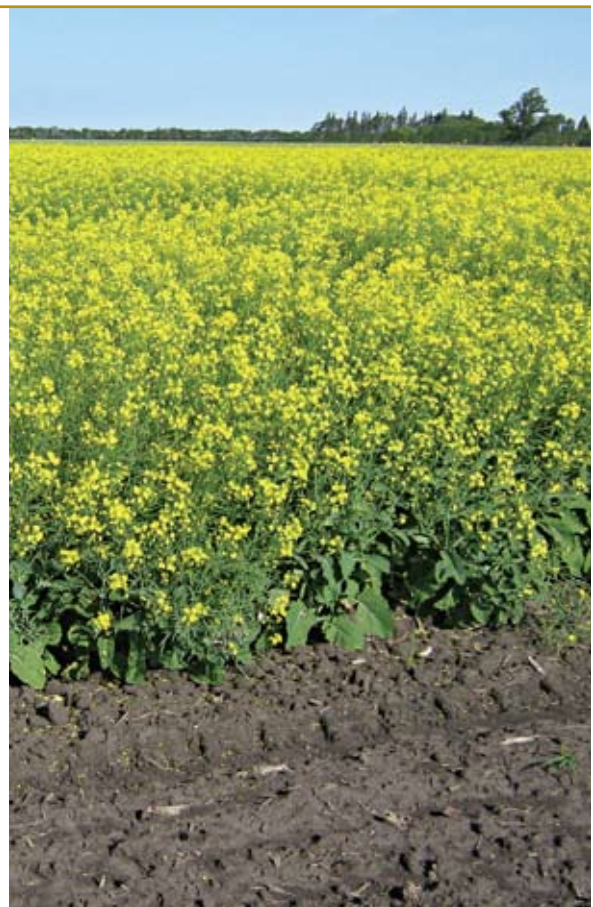


Make sure you use the LSD as a tool when selecting a variety. The rule of thumb is varieties should only be considered different in yield performance if the numerical difference between them is greater than the LSD value.

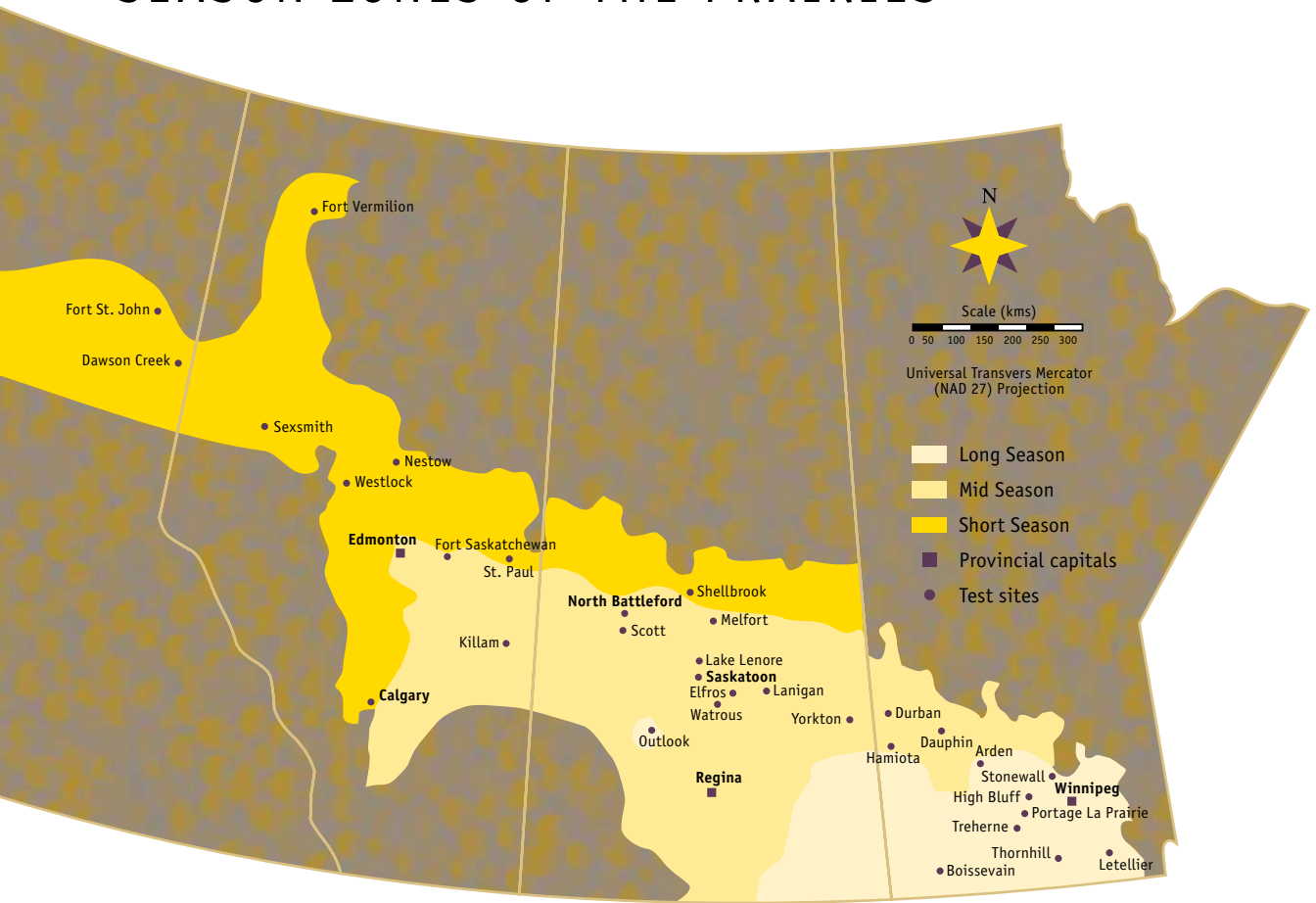
Coefficient of Variation (CV) is a good indication of a test's reliability. The lower the CV value, the more reliable the test. For example, if comparing results from two test locations, one with a CV of 6 and the other with a CV of 10, the test with the CV of 6 can be considered more reliable. There is always variability in research trial. The key is designing and managing experiments so CVs stay within a reasonable range; for the PCVT, experience has shown that CVs below 15 indicate good test reliability.

## CONSIDER BLACKLEG RESISTANCE

- Choose a variety that is moderately resistant (MR) or resistant (R) to blackleg to avoid severe infections.
- Variability does exist in blackleg populations across Western Canada.
- In recent years different strains of blackleg have been confirmed (PG3, PG4, PGT) and not all varieties have resistance to these newer strains. So on farm field performance of varieties may vary from performance in the registration trials.
- Crop rotation of 1 in 4 years is the best management approach in fields where newer blackleg strains have been confirmed, where there are high levels of blackleg, or where there has been a history of tight canola rotations.



# SEASON ZONES OF THE PRAIRIES



## TAILOR YOUR DATA!

### FOR MORE INFORMATION ON PCVT RESULTS:

- Visit our website where you can source all the canola variety information, and sort the data to tailor the information to your specific needs. [www.canolacouncil.org](http://www.canolacouncil.org)
- Contact the CCC agronomist to get the latest on local and regional canola variety information:

**DERWYN HAMMOND**

Manitoba Region  
204-729-9011

**JIM BESSEL**

North Central and  
Northeastern Saskatchewan  
306-373-6771

**TIFFANY MARTINKA**

Eastern Saskatchewan  
306-231-3663

**DOUG MOISEY**

East Central Alberta and  
Northwestern Saskatchewan  
780-645-9205

**TROY PROSOFSKY**

Southern Alberta  
403-332-1412

**JOHN MAYKO**

West Central Alberta  
780-764-2593

**ERIN BROCK**

Peace Region  
780-568-3326

# EVALUATING VARIETY DATA

VARIETY		2009 Yield % of 45H21, 5020				2008 Yield % of 45H21, 5020. All Zones Average				2007 Yield % of 45H21, 5020. All Zones Average				Days to Maturity +/- days to 45H21, 5020		Lodging Rating +/- inches		Blackleg Rating	Organization
Argentine Canola (B. napus)		ZONES (Station Years)				ZONES				ZONES		ZONES		ZONES		ZONES	ZONES	ZONES	
CHECKS	TYPE	Short (8)	Mid (14)	Long (10)	All Zones Average	Short	Mid	Long	All Zones	Short	Mid	Long	All Zones	Height +/- inches	Lodging Rating +/- inches	Blackleg Rating	Organization		
Average of 45H21 & 5020	Hyb	100	100	100	100	100	100	0	0	0	0	0	0	0	0	0			
<b>CLEARFIELD</b>																			
30423-C7 *	Syn	99	97	94	97					4	3	3	3	4	1	R	BrettYoung		
5505 CL	Hyb					91				3	2	2	2	3	0	MR	BrettYoung		
5525 CL	Hyb	103	102	100	102					3	3	3	3	4	1	R	BrettYoung		
1651H	Hyb		89	85	88					2	2	2	2	3	0	R	CANTERRA SEEDS		
30120-B6*						92				2	2	2	2	2	0	MR	CANTERRA SEEDS		
30522-C7 *	Hyb		96	97	97					3	3	3	3	4	1	R	DL Seeds		
45H73	Hyb	93	97	99	97	99	98	1	1	0	1	1	1	0	R	Pioneer Hi-Bred			
45P70	Hyb	97	98	98	97	98	102	1	2	1	2	1	1	0	R	Viterra Inc.			
<b>LIBERTY LINK</b>																			
5020	Hyb	102	102	103	102	105	101	-1	-1	-1	-1	-1	-1	0	R	Bayer CropScience			
5030	Hyb	108	104	114	108	108	114	1	0	1	1	1	5	1	R	Bayer CropScience			
5440	Hyb	118	105	117	112	110	115	1	0	1	1	1	3	1	R	Bayer CropScience			
5770	Hyb	112	107	121	113			4	3	3	4	3	1	R	Bayer CropScience				
8440	Hyb	105	103	109	105	108	107	2	0	0	0	0	0	R	Bayer CropScience				
9590	Hyb	102	104	106	104	106	107	2	0	0	1	2	0	R	Bayer CropScience				
PHS07-526 *, **	Hyb	104	102	107	104			3	2	2	2	2	2	0	R	Bayer CropScience			
<b>ROUNDUP READY</b>																			
997 RR	OP					87		2	1	1	1	1	1	0	R	BrettYoung			
4414 RR	Hyb					88		1	1	1	1	1	2	0	R	BrettYoung			
4424 RR	Hyb					92		3	2	1	2	4	0	MR	BrettYoung				
4434 RR	Hyb					88		3	2	1	2	2	0	MR	BrettYoung				
6020 RR	Hyb	100	93	102	98			5	3	3	3	0	0	MR	BrettYoung				
6040 RR	Hyb		94	103	98				1	1	1	1	2	0	R	BrettYoung			
H6087 *	Hyb	92	92	95	93			2	2	1	2	2	0	MR	BrettYoung				
1950	Hyb		94	94	94				2	2	2	2	0	MR	CANTERRA SEEDS				
1956	Syn		98	95	97				2	2	2	1	0	R	CANTERRA SEEDS				
1852H	Hyb	94	94	84	91		94	1	-1	-1	0	2	0	R	CANTERRA SEEDS				
30507-B6*	Hyb					92			2	2	2	0	0	MR	CANTERRA SEEDS				
v1037**	Hyb		93	89	91	94			1	0	1	2	0	R	Cargill - VICTORY Hybrid Canola				
V2018**	Hyb					94	96		2	2	2	1	0	MR	Cargill - VICTORY Hybrid Canola				
v2030**	Hyb					94			1	1	1	2	0	MR	Cargill - VICTORY Hybrid Canola				
30214-C7 *	Hyb		96	99	97				1	0	0	2	0	MR	DL Seeds				
30412-B6 *	Hyb			94	94					1	1	2	0	MR	DL Seeds				
D3150	Hyb	100	97	98	98	96		3	1	1	2	2	0	MR	Dupont				
D3151	Hyb	97	100	97	98	95		1	0	-1	0	1	0	MR	Dupont				
83501 RR	Syn					85	91		0	-1	0	2	0	MR	FP Genetics				
93H01RR	Hyb	96	94	93	94			3	1	1	2	2	0	MR	FP Genetics				
71-45 RR	Hyb	102	98	94	98	97		1	-1	0	0	1	0	MR	DEKALB				
45H21	Hyb	98	98	97	98	95	99	1	1	1	1	1	0	R	Pioneer Hi-Bred				
43E01	Hyb	91			91	90		-2			-2	-2	-2	MR	Pioneer Hi-Bred				
45H26	Hyb	99	101	98	100	99	101	2	1	1	1	2	0	R	Pioneer Hi-Bred				
45H28	Hyb	102	99	100	100	100		2	1	2	2	1	0	R	Pioneer Hi-Bred				
Café	OP	81			81	82	76	-1			-1	-2	0	R	SeCan				
Rugby	OP	84	89		87	86	89	1	0		0	0	0	R	SeCan				
9350	Hyb	93			93			-1			-1	-2	-1	MR	Viterra Inc.				
9553	Hyb	105	102	100	102	97		2	2	1	2	2	0	R	Viterra Inc.				
9555	Syn		95		95			2	2	2	2	2	0	R	Viterra Inc.				
46P50	Hyb	103	100	102	101	96	103	3	3	3	3	3	0	R	Viterra Inc.				
SP DESIRABLE RR	Syn	92			92		88	1			1	1	0	R	Viterra Inc.				

\* Not registered \*\* Specialty oil Type: OP - open pollinated; Syn - synthetic; and Hyb - hybrid

# SHORT SEASON ZONE TEST 1

VARIETY	2009 Average Yield	Dawson Creek, BC	Ft. St. John, BC	Ft. Vermilion, AB	Nestow, AB	Sexsmith, AB	Shellbrook, SK	St. Paul, AB	Westlock, AB
<b>CHECKS</b> Average of 45H21 & 5020	100	100	100	100	100	100	100	100	100
<b>CLEARFIELD</b>									
45H73	93	97	102	102	80	92	99	99	76
<b>LIBERTY LINK</b>									
5020	101	99	99	103	105	100	103	99	103
8440	105	98	114	102	104	105	123	105	91
9590	102	107	113	106	99	93	121	91	89
<b>ROUNDUP READY</b>									
1852H	94	101	92	97	92	82	103	92	94
71-45 RR	102	123	108	89	102	99	94	109	93
45H21	99	101	101	97	95	100	97	101	97
43E01	91	102	94	90	92	89	85	91	83
45H26	99	110	105	102	89	102	101	102	82
45H28	102	106	111	111	91	100	99	108	88
D3151	97	109	101	101	90	96	90	100	87
Café	81	86	86	73	87	84	68	88	79
9350	93	105	93	95	86	92	85	101	88
9553	105	110	110	105	94	110	96	106	112
SP DESIRABLE RR	92	97	99	94	84	85	84	96	97
<b>45H21, 5020 Yield bu/ac</b>	<b>47</b>	<b>32</b>	<b>56</b>	<b>63</b>	<b>37</b>	<b>33</b>	<b>67</b>	<b>21</b>	<b>66</b>
CV	8	9	8	10	6	6	6	8	15
LSD .05 (As % OF 45H21, 5020)	11	13	11	14	8	8	8	11	19

\* Not registered \*\* Specialty oil

# SHORT SEASON ZONE TEST 2

VARIETY	2009 Average Yield	Dawson Creek, BC	Ft. St. John, BC	Ft. Vermilion, AB	Nestow, AB	Sexsmith, AB	Shellbrook, SK	St. Paul, AB	Westlock, AB
<b>CHECKS</b> Average of 45H21 & 5020	100	100	100	100	100	100	100	100	100
<b>CLEARFIELD</b>									
30423-C7 *	99	94	93	92	87	113	104	113	94
5525 CL	103	100	99	87	98	109	113	114	106
45P70	97	92	100	91	83	100	104	94	108
<b>LIBERTY LINK</b>									
5020	102	106	101	102	106	101	104	97	102
5030	108	104	95	101	93	120	127	114	111
5440	118	108	110	107	118	116	129	131	125
5770	112	95	105	104	111	123	127	120	107
PHS07-526 *, **	104	96	104	89	104	100	120	108	109
<b>ROUNDUP READY</b>									
6020 RR	100	97	89	101	96	108	105	100	107
H6087 *	92	78	86	90	92	91	106	101	90
93H01RR	96	89	95	91	93	98	105	97	98
45H21	98	94	99	98	94	99	96	103	98
D3150	100	96	100	95	92	105	92	101	121
Rugby	84	88	82	79	72	83	82	92	95
46P50	103	103	108	97	85	114	103	110	100
<b>45H21, 5020 Yield bu/ac</b>	<b>50</b>	<b>35</b>	<b>73</b>	<b>59</b>	<b>36</b>	<b>28</b>	<b>70</b>	<b>20</b>	<b>81</b>
CV	8	10	7	8	6	11	7	8	11
LSD .05 (As % OF 45H21, 5020)	12	14	10	11	8	17	10	12	17

\* Not registered \*\* Specialty oil

## ARE YOU REGISTERED TO EXPORT?

De-registered canola varieties can be detected at very low levels and will result in rejected export shipments and increased monitoring of Canadian canola. If you have canola seed of the following de-registered varieties, please contact your grain company before you deliver.



- Roundup Ready polish (*B. rapa*) canola **Hysyn 101RR**
- Bromoxynil tolerant: **295BX Cartier BX, Zodiac BX, Renegade BX**
- Liberty tolerant (*Brassica napus*): **Exceed, 2631 LL, Swallow, SW Legion LL, SW Flare LL, LBD 2393 LL, Innovator, Independence, HCN 14, Phoenix**
- Liberty Link hybrids: **3850, 2153, 3640, 3880, 2163, 2273**

# MID SEASON ZONE TEST 1

VARIETY	2009 Average Yield	Dauphin, MB	Durban, MB	Edmonton, AB	Elfros, SK	Ft. Saskatchewan, AB	Hamiota, MB	Killam, AB	Lake Lenore, SK	Lanigan, SK	Melfort, SK	North Battleford, SK	Scott, SK	Warrus, SK	Yorkton, SK
<b>CHECKS</b> Average of 45H21 & 5020	100	100	100	100	100	100	100	100	100	100	100	100	100	100	100
<b>CLEARFIELD</b>															
45H73	97	99	87	91	85	97	95	98	108	98	94	99	99	120	90
<b>LIBERTY LINK</b>															
5020	102	103	98	101	104	105	100	99	98	100	109	103	98	106	104
8440	103	104	95	98	100	106	94	95	113	102	106	110	99	120	94
9590	104	107	87	100	89	107	98	109	111	105	108	110	100	123	101
PHS07-526 *, **	102	99	101	102	89	104	101	107	107	98	105	110	94	112	104
<b>ROUNDUP READY</b>															
H6087 *	92	92	83	86	85	86	90	109	88	94	86	96	94	110	87
1950	94	97	91	83	86	83	99	108	100	91	82	101	87	110	91
1852H	94	93	82	91	74	82	97	114	94	88	99	96	97	99	104
v1037 **	93	97	100	86	72	79	102	86	107	90	88	98	101	102	96
71-45 RR	98	92	100	110	87	98	92	102	94	88	94	102	109	110	92
45H21	98	97	102	99	96	95	100	101	102	100	91	97	102	94	96
45H26	101	93	106	103	90	85	100	109	116	101	89	103	101	119	98
45H28	99	95	99	105	90	83	96	116	104	101	97	102	100	108	94
D3150	97	101	90	97	88	97	95	85	109	104	92	103	91	110	97
D3151	100	101	108	90	88	92	105	96	106	102	99	96	98	114	97
Rugby	89	88	95	85	77	78	86	94	98	88	82	95	90	104	83
9553	102	105	98	103	96	98	97	116	93	106	103	104	88	119	97
<b>45H21, 5020 Yield bu/ac</b>	<b>63</b>	<b>73</b>	<b>63</b>	<b>55</b>	<b>46</b>	<b>57</b>	<b>59</b>	<b>30</b>	<b>77</b>	<b>64</b>	<b>82</b>	<b>72</b>	<b>73</b>	<b>89</b>	<b>38</b>
CV	9	7	12	7	6	10	10	15	12	7	7	4	9	9	11
LSD .05 (As % OF 45H21, 5020)	13	10	16	10	8	13	13	21	18	10	9	6	12	14	15

\* Not registered \*\* Specialty oil

# MID SEASON ZONE TEST 2

VARIETY	2009 Average Yield	Dauphin, MB	Durban, MB	Edmonton, AB	Elfros, SK	Ft. Saskatchewan, AB	Hamiota, MB	Killam, AB	Lake Lenore, SK	Lanigan, SK	Melfort, SK	North Battleford, SK	Scott, SK	Watrous, SK	Yorkton, SK
<b>CHECKS</b> Average of 45H21 & 5020	100	100	100	100	100	100	100	100	100	100	100	100	100	100	100
<b>CLEARFIELD</b>															
30423-C7 *	97	84	97	103	91	91	90	110	107	105	98	103	104	96	84
5525 CL	102	103	102	108	94	93	90	119	103	106	105	101	103	105	95
1651H	89	83	91	100	90	75	97	99	89	84	89	91	92	83	89
30522-C7 *	96	102	104	100	82	85	93	107	92	100	105	101	99	98	81
45P70	98	102	102	101	92	94	101	108	92	96	97	104	91	94	92
<b>LIBERTY LINK</b>															
5020	102	106	100	100	102	108	104	92	102	98	103	103	100	103	100
5030	104	88	111	110	102	107	109	99	102	108	112	108	101	105	101
5440	105	94	110	115	106	113	101	105	98	116	110	112	93	109	90
5770	107	112	100	110	105	115	115	115	98	116	109	116	106	111	77
<b>ROUNDUP READY</b>															
6020 RR	93	87	82	101	101	91	99	78	95	94	93	96	94	100	90
6040 RR	94	92	90	92	90	95	94	93	93	101	97	98	97	106	83
1956	98	94	94	99	89	100	103	107	97	97	101	97	103	97	92
30214-C7 *	96	97	109	90	90	87	96	101	97	93	97	98	100	97	87
93H01RR	94	95	87	98	89	94	101	105	84	90	96	100	95	90	87
45H21	98	94	100	100	98	92	96	108	98	102	97	97	100	97	100
9555	95	86	105	96	80	99	106	98	89	96	96	101	98	92	84
46P50	100	104	102	99	96	96	101	111	98	106	104	101	99	97	91
<b>45H21, 5020 Yield bu/ac</b>	<b>61</b>	<b>65</b>	<b>51</b>	<b>48</b>	<b>41</b>	<b>59</b>	<b>58</b>	<b>33</b>	<b>86</b>	<b>60</b>	<b>71</b>	<b>76</b>	<b>67</b>	<b>101</b>	<b>42</b>
CV	9	13	14	6	7	9	8	12	10	9	6	4	8	6	13
LSD .05 (As % OF 45H21, 5020)	12	18	20	8	10	13	11	17	13	13	9	6	11	8	17

\* Not registered \*\* Specialty oil

# LONG SEASON ZONE TEST 1

VARIETY	2009 Average Yield	Arden, MB	Boissevain, MB	High Bluff, MB	Letellier, MB	Outlook, SK	Portage, MB	Stonewall, MB	Thornhill, MB	Treherne, MB	Winnipeg, MB
<b>CHECKS</b> Average of 45H21 & 5020	100	100	100	100	100	100	100	100	100	100	100
<b>CLEARFIELD</b>											
45H73	99	103	92	98	91	101	99	94	98	116	98
<b>LIBERTY LINK</b>											
5020	104	103	109	106	102	106	101	103	107	106	98
8440	109	107	115	112	118	109	99	101	100	117	108
9590	106	108	107	106	107	105	103	101	103	117	107
PHS07-526 *, **	107	108	119	114	92	102	93	106	114	107	114
<b>ROUNDUP READY</b>											
H6087 *	95	99	112	98	90	91	76	92	96	102	91
1950	94	69	104	102	99	91	91	87	92	96	109
1852H	84	73	86	90	74	101	82	84	84	91	79
v1037 **	89	89	95	96	93	93	83	84	94	82	81
30412-B6 *	94	81	98	89	91	93	94	96	97	105	98
71-45 RR	94	80	106	88	98	110	84	96	80	97	97
45H21	96	97	91	94	98	94	99	97	93	94	102
45H26	98	91	94	92	104	102	93	99	93	114	97
45H28	100	102	100	99	100	105	85	97	104	119	95
D3150	98	102	95	97	85	107	95	102	88	115	94
D3151	97	104	103	93	82	102	97	97	97	104	91
9553	100	99	101	100	95	109	81	96	105	119	94
<b>45H21, 5020 Yield bu/ac</b>	<b>71</b>	<b>57</b>	<b>63</b>	<b>77</b>	<b>63</b>	<b>98</b>	<b>104</b>	<b>80</b>	<b>75</b>	<b>48</b>	<b>51</b>
CV	9	8	7	7	13	6	14	8	13	8	7
LSD .05 (As % OF 45H21, 5020)	13	11	10	10	18	8	18	11	21	13	9

\* Not registered \*\* Specialty oil

# LONG SEASON ZONE TEST 2

VARIETY	2009 Average Yield	Arden, MB	Boissevain, MB	High Bluff, MB	Letellier, MB	Outlook, SK	Portage, MB	Stonewall, MB	Thornhill, MB	Treherne, MB	Winnipeg, MB
<b>CHECKS</b> Average of 45H21 & 5020	100	100	100	100	100	100	100	100	100	100	100
<b>CLEARFIELD</b>											
30423-C7 *	94	100	104	90	76	86	89	97	97	104	98
5525 CL	100	100	90	98	85	96	105	95	101	107	120
1651H	85	89	91	79	73	79	80	86	100	92	82
30522-C7 *	97	101	95	104	66	87	99	103	93	109	112
45P70	98	91	89	97	91	100	97	104	99	106	104
<b>LIBERTY LINK</b>											
5020	102	105	108	103	101	104	95	105	96	107	100
5030	114	128	112	115	99	111	109	99	128	120	116
5440	117	126	103	111	107	106	121	106	152	116	119
5770	121	127	116	117	111	101	128	116	136	124	131
<b>ROUNDUP READY</b>											
6020 RR	102	94	87	96	106	93	116	101	96	109	124
6040 RR	103	103	94	98	108	96	106	104	107	104	111
1956	95	105	99	97	80	96	90	93	93	102	95
30214-C7 *	99	100	91	103	106	96	92	98	102	107	95
93H01RR	93	96	93	93	85	91	95	87	109	88	89
45H21	98	95	92	97	99	96	105	95	104	93	100
46P50	102	100	95	91	89	104	96	108	127	109	99
<b>45H21, 5020 Yield bu/ac</b>	<b>67</b>	<b>56</b>	<b>50</b>	<b>79</b>	<b>60</b>	<b>103</b>	<b>88</b>	<b>75</b>	<b>64</b>	<b>49</b>	<b>41</b>
CV	8	7	9	5	12	6	10	8	11	6	9
LSD .05 (As % OF 45H21, 5020)	12	10	13	8	15	9	15	11	20	9	13

\* Not registered \*\* Specialty oil