

Thank You for Attending Today's Webinar



**Canola Stand Establishment –
Getting the Crop Off to A Great Start**



Doug Moisey
Senior Agronomy Specialist, Canola Council of Canada
moiseyd@canolacouncil.org
780-645-3624



Erin Brock
Agronomy Specialist, Canola Council of Canada
brocke@canolacouncil.org
780-568-3326

**Stand establishment.
Does 50% apply to
you in 2010?**



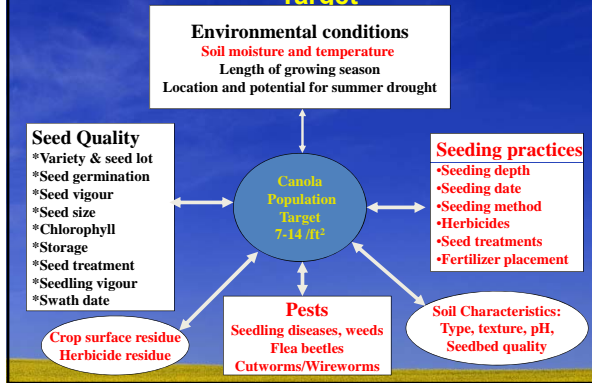
**Canola's Problem:
Seedling Mortality**

- **High seedling mortality**
 - small seed size
 - mortality inconsistent
- **Average conditions 40-60% emergence**
 - Many causes of “poor emergence”, often multiple factors i.e. speed, dry soils, soil temperatures.....

Things to be thinking about for 2010 Spring

1. How dry were your fields last year- are herbicide residues an issue?
2. Was straw/residue an issue in 2009 with regards to stand establishment? Is it or will it be an issue in 2010?
3. Are you pushing the limits of fertilizer with the seed?
4. How soon do you plan to seed and what's the soil temperature
5. How fast do you plan to seed?

Factors Affecting Plant Population Target



Keep a Sample

- A minimum of a 500 gram (2 cups) sample of seed of ALL crops sown on your farm should be saved at least until the crops are well established.
- Store the samples in a Ziploc bag or use a sample bag from a seed laboratory.
- Label the samples with the information on the seed lot or enclose the blue certified seed tag with the sample.
- Ensure the samples are stored in a rodent proof container in a cool, dry location away from direct sunlight and wide temperature fluctuations."

At the Shop

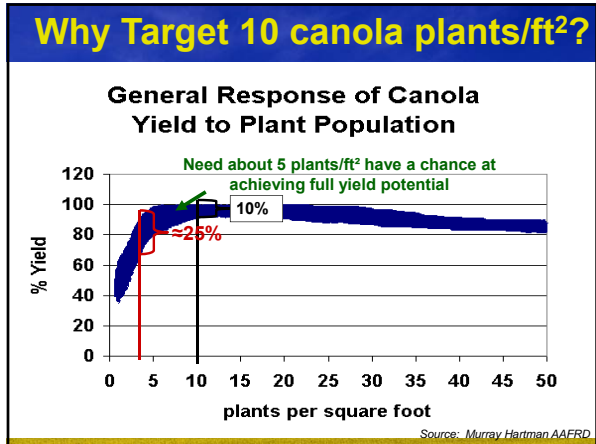
The checklist

- Running through the Drill
 - Openers: Worn or Okay? Are you sure
 - Air Seals on Tanks checked?
 - Rotate the hoses?
 - Check the underside of Caps on Venturri Towers?
 - Front to back and side to side leveled?
 - Packer pressure



Stand Establishment

- What seeding rate do you use?
 - 5 lb/ac most popular – 36.9% of growers in survey
 - 35.9% were seeding at rates less than 5 lb/ac
 - Follow up question – What plant population do you target with that seeding rate
 - Average was 9.7 plants/ft²
 - However, 77.4% answered "Do not know"





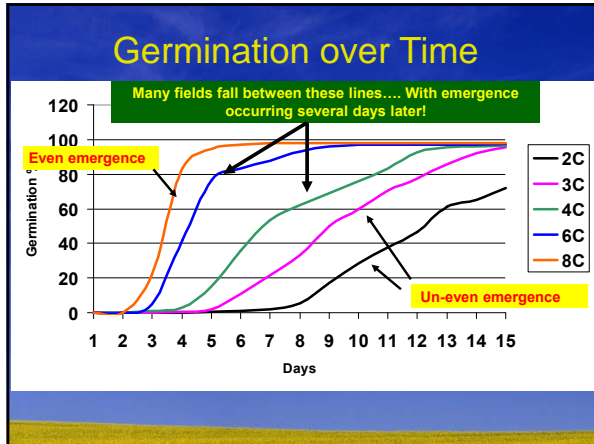






Soil Temperature


- Earlier seeding and switch to min-till has resulted in seeding into lower than optimal soil temperatures at seeding time
 - Problems with Cooler soil temps
 - Increased time needed for emergence
 - Increased exposure to seedling diseases
 - Impairs protein production in leaves
 - Pay attention to soil temperature

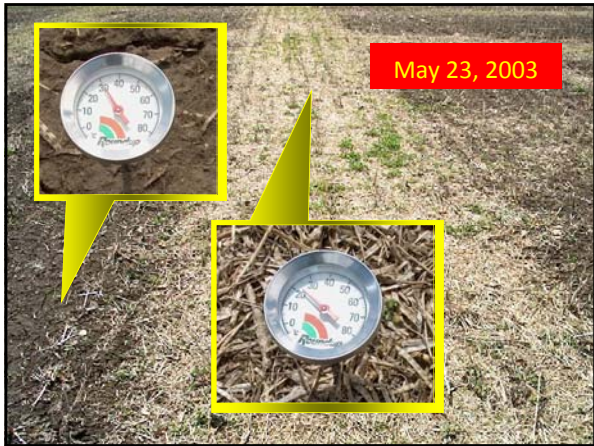


- ### Soil Temperature
- Look at soil temperatures averaged over a minimum of three days (Temps taken at 1" at 8:30 AM and 4:00 PM)
 - Canola can imbibe water and germinate in 2°C (36°F) soil temperature
 - Metabolism and growth rate will be slow
 - Optimum soil temp is 10°C
 - A good starting point is 4-5°C

Residue Management

- Successful residue management involves starting the previous fall
 - Spread width of straw & chaff should equal width of cut by swather or straight cut header
- The use of heavy harrows to spread straw in the fall or early spring can be useful but watch aggressiveness



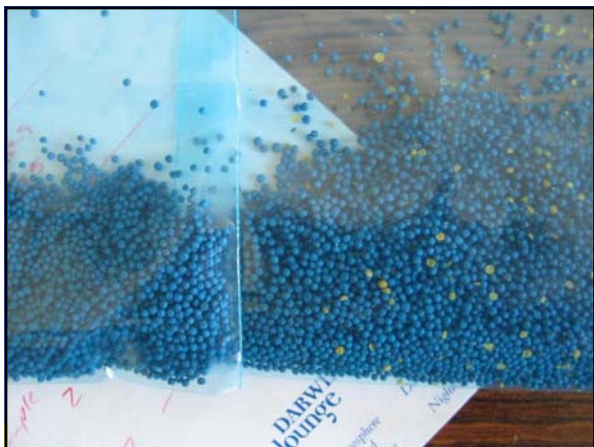


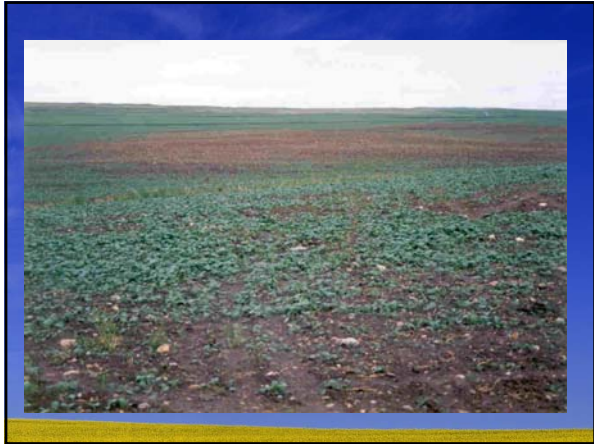


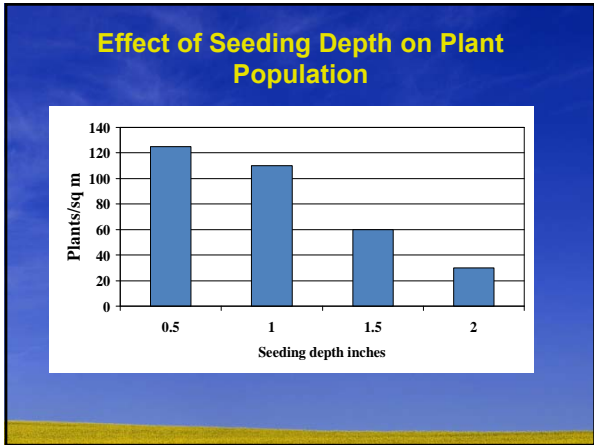


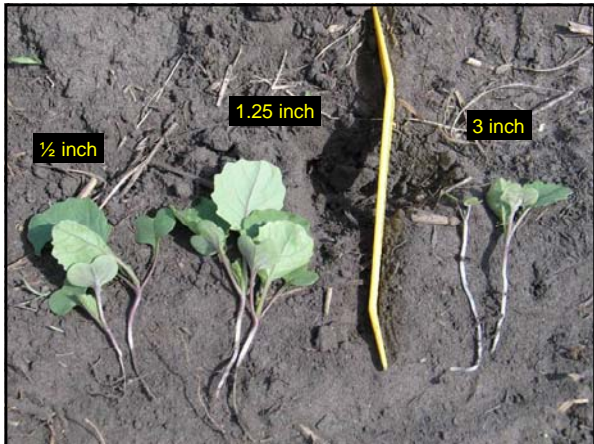




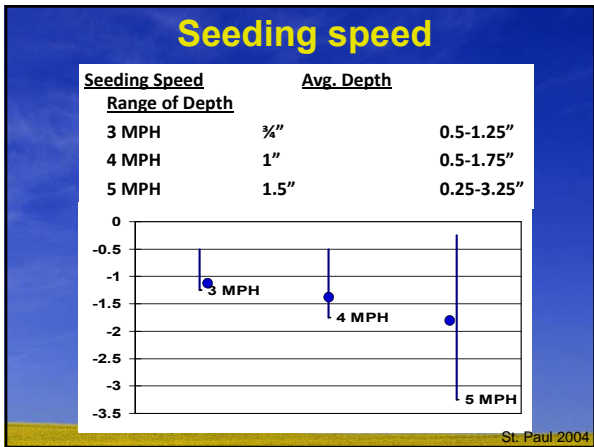


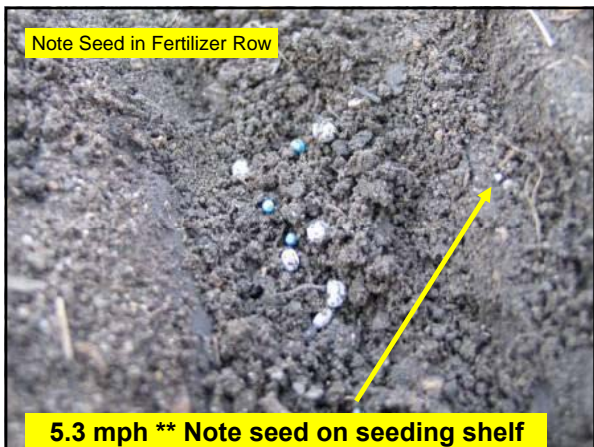


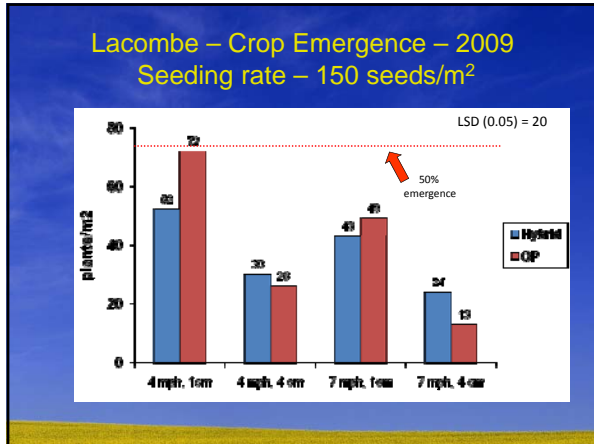


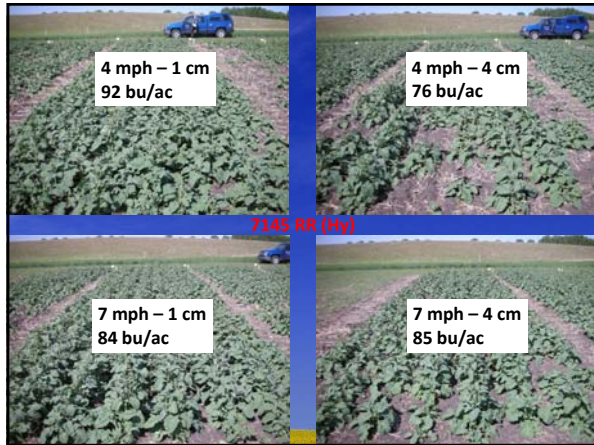












If due to acres you need to seed sooner into 3° C soils the following practices are recommended

Recommendations for Seeding into Cold soils

Seeding into cool soil conditions (<5°C) the following is recommended:

- Maintain or increase seeding rates to meet a minimum of 70-100 plants/m²(Recommended levels are 60-200 plants/m²)
 - Remember on average on 50% of seeds sown emerge
 - may be less in cold soils!!!!
- If Flea beetles were present in 2009 look at a extended flea beetle treatment
- Ensure that seed is in the ½- 1" layer below the press wheel furrow.(SLOW DOWN)

Recommendations for Seeding into Cold soils

Seeding into cool soil conditions (<5°C) the following is recommended:

- DO NOT CHASE MOISTURE!!!! (Especially if May 1)
- Use seed placed P.O₂
- Pre-seed Burn off! Control early season weeds as they will add to the stress
